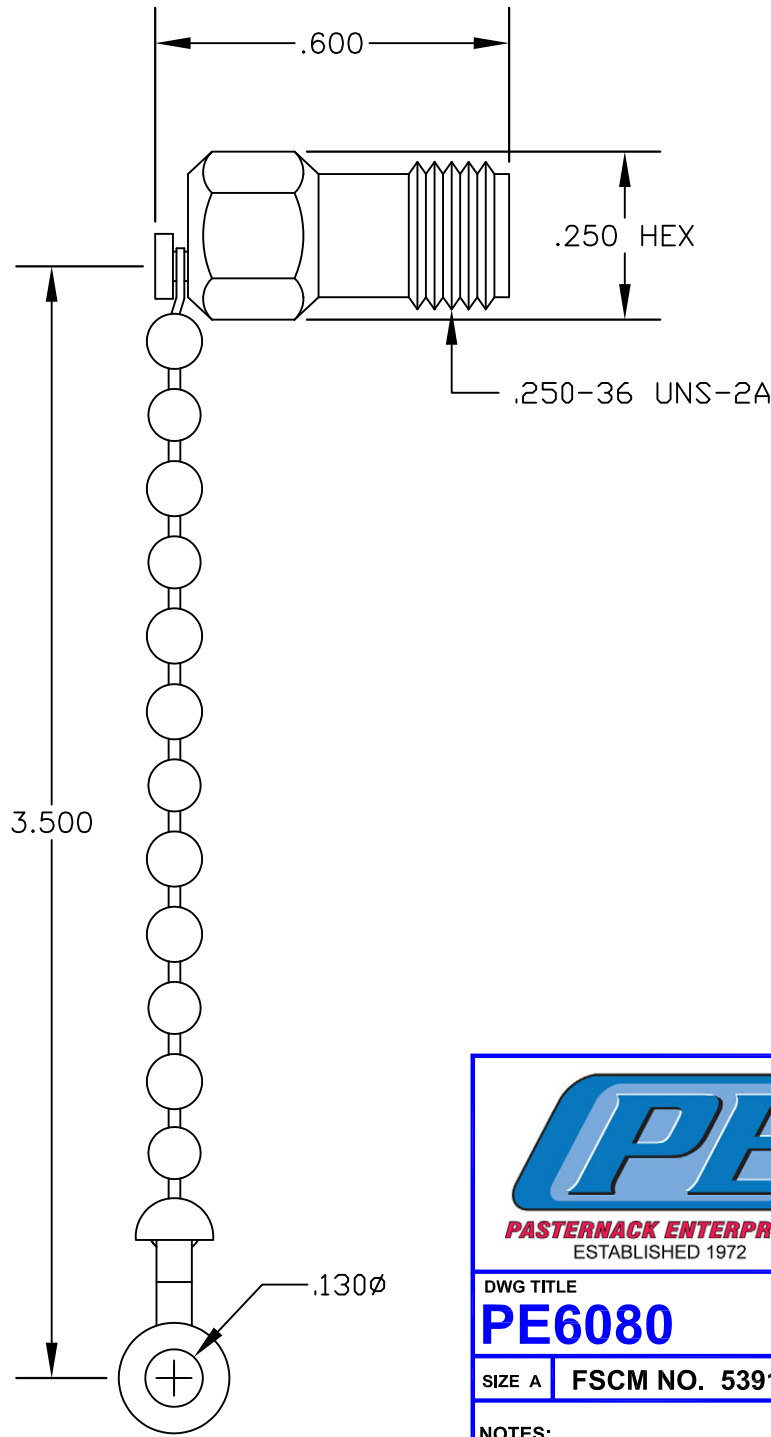


**MATERIALS**

<b>BODY</b>	<b>PASSIVATED STAINLESS STEEL</b>
<b>CONTACT</b>	<b>GOLD PLATED</b>
<b>INSULATOR</b>	<b>PPO</b>



SPECIFICATIONS

IMPEDANCE: 50 OHMS  
 FREQUENCY RANGE: DC TO 26.5 GHz  
 POWER HANDLING CAPABILITY: 1 WATT  
 MAXIMUM VSWR: 1.35:1



**PASTERNACK ENTERPRISES, INC.**  
 P.O BOX 16759, IRVINE, CA 92623  
 PHONE (949) 261-1920 FAX (949) 261-7451  
 WEB ADDRESS: [www.pasternack.com](http://www.pasternack.com)  
 E-MAIL ADDRESS: [sales@pasternack.com](mailto:sales@pasternack.com)  
**COAXIAL & FIBER OPTICS**

DWG TITLE		DES.			
<b>PE6080</b>		SMA FEMALE PRECISION TERMINATION WITH CHAIN, FREQUENCY RANGE: DC TO 26.5 GHz			
SIZE A	<b>FSCM NO. 53919</b>	CAD FILE	072806	SCALE	N/A
					127

**NOTES:**  
 1. UNLESS OTHERWISE SPECIFIED ALL DIMENSIONS ARE NOMINAL.  
 2. ALL SPECIFICATIONS ARE SUBJECT TO CHANGE WITHOUT NOTICE AT ANY TIME.